



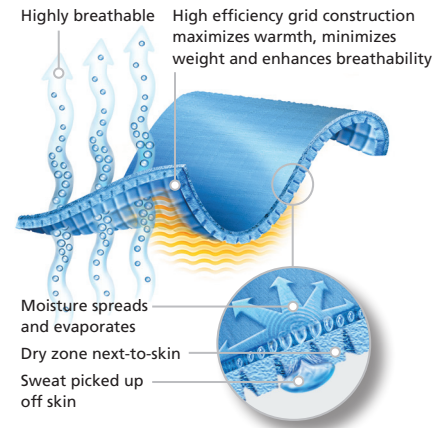
COMFORT
MADE
POSSIBLE

Polartec® Power Dry® High Efficiency™

Polartec® Power Dry® High Efficiency™ fabrics are designed to keep your skin dry when you sweat. All fabrics in this series feature a bi-component knit construction that uses different yarns on either side of the fabric. This creates two different surfaces: one that is optimized to move moisture away from the skin, the other to dry quickly.

Superior moisture management plus our patented (US Patent #6927182) High Efficiency™ construction ensures that athletes get the most bang from their caloric buck. These fabrics weigh less, take up less pack space, and deliver more insulation and breathability than most fabrics in their class.

Ideal Uses: Polartec® Power Dry® High Efficiency™ fabrics are highly breathable, and are ideal as the base layer for all sports, either as underwear or technical shirting.



How Does It Work?

Moisture Management

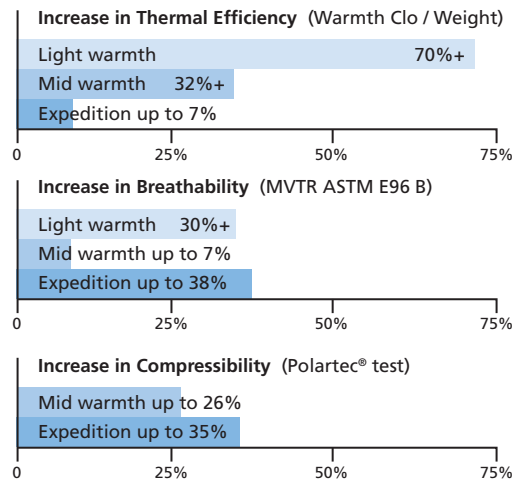
Moisture and high relative humidity next to the skin cause discomfort. Polartec® Power Dry® keeps the skin dry through three complementary mechanisms:

1. The fabric is highly breathable and does not restrict the movement of moisture vapor.
2. "Touch points" on the fabric inner surface draw off the sweat. Sweat is wicked off the skin to the outside of the fabric where it spreads rapidly for evaporation. Polartec® Power Dry® fabrics move at least 30% more moisture away from the skin than single component fabrics.
3. When the sweat reaches the outside of the fabric, it spreads out to many times its original surface area, enabling it to dry at least 2 times faster than cotton.

High Efficiency

The raised fabric pillars on the inside create touch points for moisture pick up off the skin. The open air channels between those pillars ensure that the fabric delivers the highest levels of breathability, compressibility, and the highest warmth per fabric weight. Polartec® Power Dry® High Efficiency™ fabrics deliver performance in the cleanest way possible, by leaving out what you don't need.

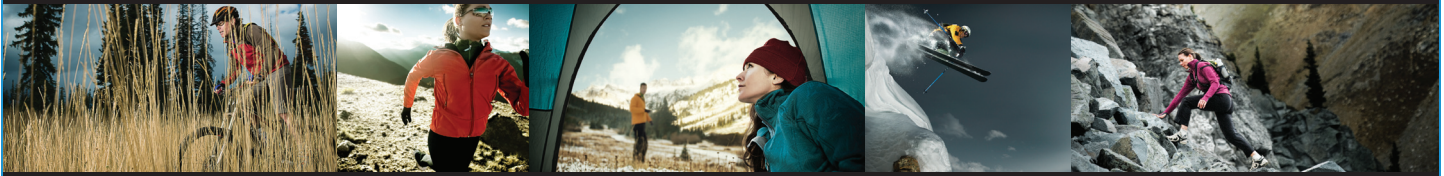
Increased performance of Polartec® Power Dry® High Efficiency™ fabric as compared to reference standards*



*Reference standards are other high quality Polartec® fabrics in each weight class. Polartec® Power Dry® High Efficiency™ styles often perform far superior to other manufacturers' products.

Technical Highlights

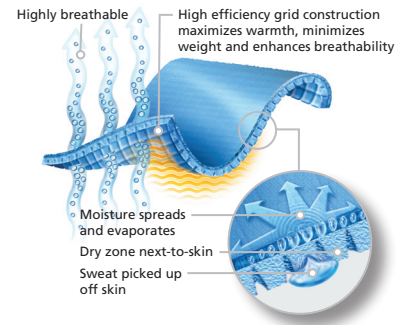
- Patented bi-component construction has superior wicking action which keeps your skin dry when you sweat
- Highly breathable to provide comfort in all activities; does not restrict the movement of moisture vapor
- Dries quickly
- Soft surface next-to-skin provides all-day comfort
- Machine washable
- Provides good sun protection (UPF 15) in most styles



Polartec® Power Dry® High Efficiency™

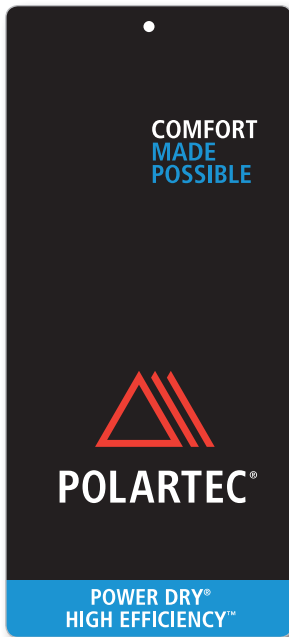
Polartec® Power Dry® High Efficiency™ fabrics are designed to keep your skin dry when you sweat. The High Efficiency™ construction further enhances breathability, minimizes weight, and maximizes warmth for total comfort.

- Superior wicking action
- Keeps your skin dry when you sweat
- Highly breathable
- Dries quickly
- Comfortable next-to-skin
- Machine washable

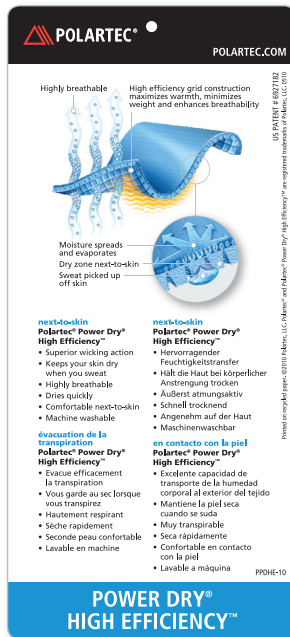


Hang Tags

Garment and Accessory tags are available with this fabric.



PPDHE-10



PPDACC-10

Technologies

Technology hang tags are available with this fabric.



PSPTEC-10



POTEC-10



PORPTEC-10



PECOREC-10

Woven Labels



PLPPDV-10



PLPPDS-10

Heat Transfer Labels

Clear background, red peaks, and either black or white lettering.



PHTB-10 (BLACK)



PHTW-10 (WHITE)